

22nd ANNUAL VETERANS MEMORIAL CAR SHOW

Produced By

Volunteers for Veterans Foundation

In Memory of Mike Wilburn

Sunday, October 7, 2012, 8 a.m.-3:30 p.m.

At Jerry L. Pettis Memorial VA Medical Center, 11201 Benton, Loma Linda, Calif. 92357

**PRESENTING
SPONSOR**



BEAUTIFUL TREE LINED GROUNDS - BLACKTOP PARKING
LIMIT TO 1100 CARS / T-SHIRT FOR ALL PRE-REGISTERED ENTRIES
\$20.00 PRE-REGISTRATION ENDS SEPT 23rd or sold out
(SHOW SOLD OUT LAST 4 YEARS)

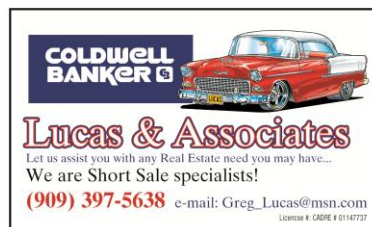
Opportunity Drawing -Giving away one prize per minute
PANCAKE BREAKFAST** GOOD VARIETY OF FOOD**BINGO
T-shirts **Dog Tags ** KOLA Radio 99.9 FM ** 50/50 ** Unique Trophies
Trivia Quiz ** Coloring Contest** Model Car Contest**Scavenger Hunt

MAJOR CAR SHOW SPONSORS

**Star
Auto Parts**



When your image matters
800.842.0983
www.midnightimpressions.com



**NEW CAR SHOW INFORMATION
CAR SHOW CHAIRPERSON BUTCH SCHULTZ**

To contact Butch call 909-350-9816 extension 2

Vendor Information and Trophy Sponsorship Larry Volk

To contact Larry call 909-350-9816 extension 1

Club Parking or Parking Questions Warren Reeves

To contact Warren call 909-350-9816 extension 3

Program Advertising for 2012 Betty Volk

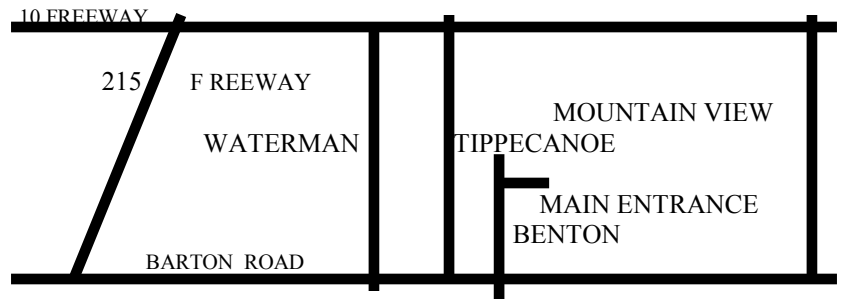
To contact Betty call 909-350-9816 extension 1

www.veterancarshow.com, Fax 909 823-0899, or E-MAIL vetcarshow2002@aol.com

NO PETS, GO-PEDS, SCOOTER, BICYCLES, SKATEBOARDS, ROLLER BLADES AT THE SHOW

**REGISTRATION ENDS
SEPT 23RD OR SOLD OUT**

**(SHOW SOLD OUT LAST 4 YEAR)
CONFIRMATION LETTERS
TO BE SENT OUT SEPT 7 TH**



Registration Form

Registration \$20.00

NAME

STREET

CITY

STATE

ZIP

CLUB AFFILIATION

MAKE & MODEL

PHONE #

T-SHIRT SIZE

HOTEL INFO

Liability: In consideration of the acceptance of the right to participate in the Veterans Car Show, entrants and participants by execution of this form, release and discharge the representatives, and anyone else connected with management or volunteers, servants, or representatives, and anyone else connected with management or presentation for the car show, from and against all liability of loss that the participants or entrant, and/or entrant's guests, including family and relatives may sustain or incur as a result of any known or unknown damages, injuries, claims, demands, cost, or judgments arising from participant's or entrant's involvement in the Veteran's Car Show.

Signature of Entrant

Are you Active Military or a Veteran Yes or No

MAKE CHECKS PAYABLE TO: Veterans Car Show

MAIL REGISTRATION TO: VA Car Show 25612 Barton Rd #240 Loma Linda, CA 92354-3110